



Whole House

OneFlow™+

Salt-Free

Scale Prevention and Water Filtration

An economical and environmentally friendly physical water treatment technology that protects pipes, extends life of appliances, and provides great tasting, filtered water.

- Rated most effective scale prevention technology[†]
- Save up to \$300 annually[‡]
- Environmentally friendly - no electricity, no wasted water
- No drain required
- Great tasting water at every tap - reduces chlorine taste and odor
- Virtually maintenance-free[§]
- High capacity
- Easy Installation



Introduction
Video



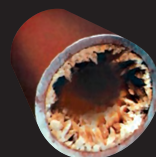
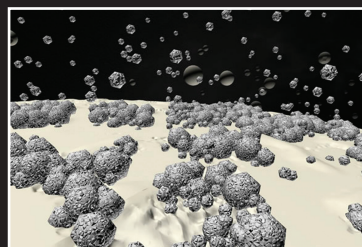
Installation
Video

[†]WaterReuse Research Foundation, Evaluation of Alternatives to Domestic Ion Exchange Water Softeners, 2013
[‡]Based on 4 person home using 75 gallons per person daily §Annual / Triennial filter replacement

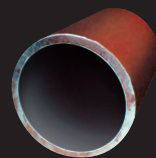


Template Assisted Crystallization (TAC) Technology

Using Template Assisted Crystallization (TAC) technology, OneFlow+ Scale Prevention Cartridge attracts and converts “hard” minerals into harmless, inactive “soft” scale particles that stay suspended in water and flow freely through a system rather than sticking to pipes. TAC technology does not add or remove anything from water, allowing useful minerals such as calcium, potassium, and magnesium to remain.



BEFORE



AFTER



OneFlow+ Complete System			
7100638	OFPSYS	Scale Prevention and Water System	
OneFlow+ Water Filter Replacements			
7100639	OFPRFC	Radial Flow Carbon Block Cartridge	F40
7100640	OFPSP	Scale Prevention Cartridge	F41
7100641	OFPCOM	Combo Pack	FP14
OneFlow+ System Replacement Parts			
7300759	OFPHSG	Housing and Head Assembly	
7300760	OFPA	Inlet / Outlet Red Adapter Locking Pin	
7300761	OFPA	1-in NPT Inlet / Outlet Adapters	
7300762	OFPOC	Outlet Connector	
7300763	OFPTOOL	Multifunction Tool	
7300764	OFPMB	System Mounting Bracket	
Operating Conditions			
Rated Flow		Max 10 gpm	
Working Temp		40 - 100° F (4.4 - 38° C)	
Working Pressure		10 - 90 psi - a pressure limiting valve must be installed when pressure exceeds 70 psi	
Working Conditions		For indoor use - protection required when installed outdoors	
Size		10-in x 10-in x 18-in	
Min Net Weight		15 lbs	
Contaminants Reduced		Scale, Sediment, Other chemicals, Chlorine Taste and Odor	
Conditions For Use			
pH		6.5 to 8.5	
Max Hardness		75 grains per gallon	
Chlorine		< 3 ppm	
Iron, Ferrous		< 0.3 mg/L	
Manganese		< 0.05 mg/L	
Copper		< 1.3 mg/L	
Oil & Phosphates		Zero	
Hydrogen Sulfide		Zero	